

# MARINE THEATRE

LYME REGIS

APRIL TO JUNE 2024

MUSIC • COMEDY • THEATRE  
SCREENINGS • COMMUNITY EVENTS



Photo: Florence Akpan, 22 June

THE  
OYSTER  
& FISH  
HOUSE

## Pre-theatre meal 2 courses £19.50

Enjoy a pre-theatre dinner,  
exclusive to Marine Theatre  
visitors\*

Less than a 15 minute walk  
from the theatre



\* Please let us know you would like the pre-theatre menu when booking.  
Valid on the day of your show.

Open Tuesday Dinner to Sunday Lunch\*

[theoysterandfishhouse.co.uk](http://theoysterandfishhouse.co.uk) | [@theoysterandfishhouse](https://twitter.com/theoysterandfishhouse)  
The Oyster & Fish House, Cobb Rd, Lyme Regis DT7 3JP

01297 446910 | [Reservations@theoysterandfishhouse.co.uk](mailto:Reservations@theoysterandfishhouse.co.uk)

# GET MARRIED BY THE SEA

Right on the seafront in Lyme Regis, the Marine Theatre is Dorset's most beautiful fully-licensed wedding venue.

There's room for up to 400 people, and we can help with everything from bands to food by Mark Hix.

Email [office@marinetheatre.com](mailto:office@marinetheatre.com) to arrange a viewing.



## TICKETS

### ONLINE

Book anytime at [marinetheatre.com](http://marinetheatre.com).

### PHONE

Call 01308 424901 to book a ticket from 9 A.M. to 5 P.M.

### MEMBERS

There is a 10% discount on tickets for members of the Marine Theatre. Please check for exceptions when booking.

### IN PERSON

Advance tickets are available from the Marine on Mondays and Fridays from 10 A.M. until 1 P.M. and from Lyme Regis Bookshop and the Bridport Tourist Information Centre during opening hours. On the door tickets are available at the Marine from an hour before each show.

### REFUNDS

Tickets will not be refunded except when an event is cancelled or postponed.

## BOOKING FEES

These are charged by vendors to provide their services. The Lyme Regis Bookshop charges £1 per ticket. Tickets purchased online or from the Bridport Tourist Information Centre have a 10% booking fee. To avoid a booking fee, tickets can be purchased from the Marine on Monday and Friday mornings.

## VISITORS' INFORMATION

Normally the bar and box office open an hour before an event starts.

The start time is when the event begins, which could be a support act. Unless stated, events have unreserved seating.

For more detailed information, please see the *Your Visit* page on our website at [marinetheatre.com](http://marinetheatre.com).

### PROGRAMME

This booklet is made from recycled paper and is carbon neutral.

### ADDRESS

Marine Theatre, Church Street, Lyme Regis, Dorset. DT7 3QB.

### CONTACT

For further information please visit [marinetheatre.com](http://marinetheatre.com) or call our office on 01297 442394.

## PARKING

We have no car-park but there is a number within very close walking distance, many of which are free after 6.00 P.M. There is a map with nearby parking on our website.

## ACCESSIBILITY

### ACCESS

We have level access to our auditorium and downstairs bar. There is an accessible toilet.

Unfortunately our upstairs bar is not accessible by wheelchair.

Our staff and volunteers are happy to help you to enjoy your visit, so please advise us of accessibility requirements by emailing [office@marinetheatre.com](mailto:office@marinetheatre.com).

### HEARING LOOP

Our hearing loop lets you hear the performance more clearly through your hearing aid. You'll need to switch your hearing aid or CI to the hearing loop setting (also known as the 'T' setting or program). The signal from the hearing loop should cover all seating areas.

### CARERS

Carers receive a complimentary ticket when accompanying a ticket holder, but should bring proof of carer's status to the event.

To ask for a carer's ticket please email [office@marinetheatre.com](mailto:office@marinetheatre.com)

### SEATING

We can reserve space for wheelchairs and mobility scooters at shows. Seating at standing shows is available for those with access needs; please ask a member of staff.

### DOGS

Assistance animals are permitted in the Marine, but pets are not.

### MORE?

Tell us ways we can be more accessible! Email suggestions for consideration to [office@marinetheatre.com](mailto:office@marinetheatre.com)

## COMMUNITY

Over the last five years we've been making the Marine an even more important part of the community by widening participation in arts and culture. We welcome performers from diverse backgrounds, so all members of the community are represented on stage. Recently we've relaunched the Marine Youth Theatre with bursaries, alongside Free Drama Days - an introduction to performing for children. There is something for everyone each month. We make sure there are free and cheap events. Increasingly we've created opportunities to perform or get involved with Community Plays, Sunday Sessions, Senior Creative sessions, volunteering, and Play Reading Groups. But if you just want to sit and watch, that's fine too!

## VOLUNTEERING

Whether it's ushering, hosting performers, or even DIY, there are lots of ways to support the running of our busy venue. If you have time to spare and would like to get involved, please email [friends@marinetheatre.com](mailto:friends@marinetheatre.com).

# WELCOME

Your neighbour, postman, doctor or sibling could be in it: we're chuffed to bits to announce our next community play. A Midsummer Lyme's Dream is staged in June, and is penned by local legend Andy Rattenbury (with a little inspiration from the Bard himself). Dozens of folks from the area join together to act, build, and create. Please join in the fun and support this special event for Lyme Regis.

The Marine encounters Shakespeare again, with the return of popular travelling troupe The Handlebards, who will perform The Comedy of Errors outside here.

It's satisfying to welcome another eclectic group of musicians as we enter Summer. I'm pleased that Florence Adooni, the Ghanaian gospel singer has chosen to play in Lyme on a very limited UK tour.

Alabaster DePlume - a favourite of Gilles Peterson - is a celebrated saxophonist and spoken word artist, and plays at the Marine in May.

In an election year, I'm pleased that the viral satirist Rosie Holt performs in May, as does comedian Rich Hall - a show on line to sell out soon.

Enjoy the Marine!

## GABBY RABBITTS

Director

## WITH THANKS TO OUR SPONSORS & PARTNERS:



Andy & Jane Littler  
Consultancy Ltd  
Biodiversity after Quarrying



Dorset  
Council



Supported using public funding by

**ARTS COUNCIL  
ENGLAND**

## CLASSES

### MARINE YOUTH THEATRE MONDAYS, WEDNESDAYS, AND SATURDAYS

Participants work alongside our experienced tutors and other young people to develop their skills, explore themes and devise new performances to share. We don't expect young people to have previous experience, just a desire and enthusiasm to get involved and work creatively. There are classes in drama, dance, and musical theatre for children ages 3-18.

From £15 a month



## MUSIC

### CHILDREN'S UKULELE WORKSHOPS

TUESDAY 2 APRIL

Did you know that the humble ukulele can be lead guitar, keyboards, rhythm and drums? Bringing her years of experience of playing professionally in The ukulele Orchestra of Great Britain, Hester will work with you on simple pieces of music through playing together with others as a group. This workshop is for children from 8-12, both beginners and beyond.

£20.00 advance

Two sessions: one starts at 10:00 A.M., another at 1:30 P.M.

## THEATRE

### ALICE IN WONDERLAND WEDNESDAY 3 APRIL

Come along and meet some of the strangest and most peculiar characters, including the mysterious Cheshire Cat, the Wacky Mad Hatter and the foul-tempered Queen of Hearts. Filled with live music and puppetry, it's the perfect theatre show for all.

From £11.00

Bar opens at 12:30 P.M.

Starts at 1:30 P.M.



## POETRY

### HOLLIE MCNISH: THE LOBSTER TOUR

FRIDAY 5 APRIL

A Sunday Times bestselling writer, expect strong language and adult content from Hollie McNish. In *Lobster*, Hollie brings her much-loved style to questions of friendship, flags and newborns, clocks, cocks and volvos, shining a ridiculous and beautifully poetic lens upon all those things we have been taught to hate, and which we might just learn to love again.

£14.00 advance / £17.00 on the door

Bar opens at 6:30 P.M.

Starts at 7:30 P.M.

## COMMUNITY EVENT / MUSIC

### LITTLE B'S BOOGIE

SUNDAY 7 APRIL

Four comedians on the bill for our bargain comedy night! As one of the most sought after acts, Markus Birdman headlines at all major comedy venues throughout the United Kingdom and Internationally. Support comes from Burt Williamson and hilarious host Tom Glover, with one more act to be confirmed.

£12.00 advance / £15.00 on the door  
Bar opens at 7:00 P.M.  
Starts at 8:00 P.M.



## COMMUNITY EVENT / THEATRE

### PLAY READING GROUP

MONDAY 8 APRIL

Unleash your inner thespian! Would you like to read a part in a play or just listen? All ages and backgrounds are welcome at our play reading group. Play titles are shared in advance. It's more fun than a Book Group with no homework to feel guilty about forgetting. This month's play is Entertaining Mr Sloane, by Joe Orton.

Free event  
Starts at 7:00 P.M.

## MUSIC

### THE SHANTY SESSIONS

THURSDAY 11 APRIL

Ahoy there—local group The Chantry Buoys sing traditional sea shanties and other well known songs. Join them for a fun sing-along with local drinks, old seafaring melodies, and maritime frolics.

Free event - no tickets  
Bar opens and starts at 7:30 P.M.



## MUSIC

### NUBIYAN TWIST

FRIDAY 12 APRIL

A blend of virtuosic players, skilled producers and inspired composers join forces to create a unique, infectious sound drawing on jazz, hip-hop, afrobeat, dancehall, soul, reggae and dance music - expect ultra-tight musicianship and powerful 9 piece, big sound.

£18.50 standing / £23.00 on the door  
Bar opens at 7:00 P.M.  
Starts at 8:00 P.M.



## MUSIC

### THE NEXTMEN

SATURDAY 13 APRIL

The Nextmen are critically acclaimed DJs and producers working with a range of hip-hop artists. Dom Search (aka Dominic Betmead) and Brad Baloo (aka Brad Ellis) often express a funk and reggae influence, and they have worked with many urban artists from the UK, US and Jamaica. Ask Richard Branson MTV, the Cannes Film Festival, any stage on any festival from Glastonbury to Bestival, Lovebox, every Noting Hill Carnival since forever, Big Chill, T In The Park, or Let Them Eat Cake - the Nextmen have happily set dancefloors alight. With support. Standing.

From £15.00

Bar opens and starts at 8:00 P.M.

## MUSIC

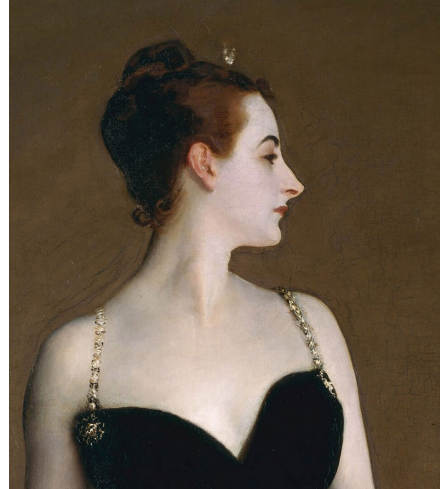
### THE SUNDAY SESSIONS

SUNDAY 14 APRIL

This regular free entry event is the Marine's dedicated time to promote quality live music—our post-roast music session. Enjoy local drinks and the best musicians. If you'd like to play, just turn up!

Free event - no tickets

Starts at 2:00 P.M.



## CINEMA

### EXHIBITIONS ON SCREEN: JOHN SINGER SARGENT - FASHION & SWAGGER

TUESDAY 16 APRIL

Sargent is known as the greatest portrait artist of his era. What made his 'swagger' portraits remarkable was his power over his sitters, what they wore and how they were presented to the audience. Through interviews with curators, contemporary fashionistas and style influencers, Exhibition on Screen's film will examine how Sargent's unique practice has influenced modern art, culture and fashion.

£10.00 advance / £12.00 on the door

Bar opens at 1:00 P.M.

Starts at 2:00 P.M.



## Headlining Lyme Regis' holiday cottage scene...

Whether you're after a dog-friendly break, beachside cottage or luxury family home with its very own swimming pool, we're sure we have the ideal escape for you. Choose from over 1000 holiday cottages in fabulous coastal, waterside and rural locations throughout Lyme Regis, Dorset and beyond.



For friendly advice from our local teams, call us or visit our website  
[www.toadhallcottages.co.uk](http://www.toadhallcottages.co.uk) | 01297 443550



## THEATRE

### THE PASSION OF LIVING SPIT

WEDNESDAY 17 APRIL

Get ready to witness the most divine comedy of all time. Join us for a hilarious theatrical journey through the life and unfortunate death of the bearded, ethnically ambiguous offspring of God, Jesus H. Christ. Featuring a smattering of JC's greatest hits; water into wine! Loaves and fishes! And with a holy host of reimagined Easter hymns, this is a Sunday school lesson unlike any other...

£16.00 advance / £20.00 on the door

Bar opens at 6:30 P.M.

Starts at 7:30 P.M.

## COMEDY

### LYME REGIS COMEDY CLUB

FRIDAY 19 APRIL

Four comedians on the bill for our bargain comedy night! As one of the most sought after acts on the comedy circuit, Tom Ward headlines at all the major comedy venues and has performed extensively throughout the United Kingdom and Internationally. Support comes from Noel Brodie and Jules O'Brian with hilarious host Tom Glover.

£12.00 advance / £15.00 on the door

Bar opens at 7:00 P.M.

Starts at 8:00 P.M.



## MUSIC

### LONDON ASTROBEAT ORCHESTRA PERFORMS TALKING HEADS

SATURDAY 20 APRIL

The best West African musicians come together in concert to perform the music of Talking Heads. This extraordinary collective have ignited a movement where cult western band repertoires are blended with African influences and have made quite an impact in doing so.

From £15.00. Standing.

Bar opens at 7:00 P.M.

Starts at 8:00 P.M.

**CINEMA**

**AN AMERICAN IN PARIS  
THE MUSICAL**

**SUNDAY 21 APRIL**

This breathtakingly beautiful Tony Award-winning Broadway musical inspired by the Oscar winning MGM film, tells the impassioned story of discovering love in the 'City of Light'.

£10.00 advance / £12.00 on the door

Bar opens at 1:00 P.M.

Starts at 2:00 P.M.



**CINEMA**

**NYE  
NATIONAL THEATRE LIVE**

**TUESDAY 23 APRIL**

Michael Sheen plays Nye Bevan in a surreal and spectacular journey through the life and legacy of the man who transformed Britain's welfare state and created the NHS. Written by Tim Price and directed by Rufus Norris (Small Island), this epic new Welsh fantasia will be screened at the theatre.

£8.00 under 18s / £14.00 advance

£16.00 on the door

Bar opens at 6:00 P.M.

Starts at 7:00 P.M.



**COMEDY**

**MATT CHORLEY:  
POLL DANCER**

**FRIDAY 26 APRIL**

With a general election on the way, Matt Chorley draws on two decades of reporting from Westminster - and two centuries of history - to deliver his hilarious guide to winning and losing at the polls. The Times Radio presenter and Have I Got News For You regular is back with his third stand-up tour, ready to focus group the audience and compile his own manifesto guaranteed to get him the keys to No10.

£19.50 early bird

£25.00 general admission

Bar opens at 6:30 P.M.

Starts at 7:30 P.M.



# Accountants for You, Your Business and Your Family

We provide our clients with a dedicated, tailor made approach based on a pro-active and personal service, to help them achieve their financial objectives.

We have considerable experience across a broad range of industry sectors, providing a quality and timely service to many local businesses.

In addition, we can advise on all aspects of Estate Planning including help in drawing up and reviewing Wills, Lasting Power of Attorney and Probate.

---

For friendly, professional advice call Mike Griffiths on

**01297 20584**

---

[www.lentells.co.uk](http://www.lentells.co.uk)

[Seaton@lentells.co.uk](mailto:Seaton@lentells.co.uk)



## MUSIC

### MR SCRUFF

SATURDAY 27 APRIL

Manchester-based Mr. Scruff is a producer, cartoonist and cross-genre selector who loves to play long DJ sets, and occasionally B2B sets with similarly wide-eared end excitable DJs. He has been DJing since 1984, and has been getting paid for it since 1994. His DJ sets can range from deep soul/funk/reggae/afro/jazz /latin/hip-hop to harder edged electro/house/new wave/techno / electronic, often all in the same night.

From £16.00. Standing.  
Bar opens at 8:00 P.M.  
Starts at 8:00 P.M.

## MUSIC

### JAZZ BY THE SEA: TERRY QUINNEY PLAYS DEXTER GORDON

SUNDAY 28 APRIL

American saxophonist Dexter Gordon was among the most influential musicians of the bebop era and beyond, with John Coltrane and Sonny Rollins following in his footsteps. Terry Quinney is established in the UK jazz scene performing at venues such as the National Theatre.

£14.00 advance / £16.00 on the door  
Bar opens at 7:00 P.M.  
Starts at 8:00 P.M.



## MUSIC

### ALABASTER DEPLUME

THURSDAY 2 MAY

Angus Fairbairn, the Manchester-born, London-based musician who records under the name Alabaster Deplume, makes music that is extremely hard to classify. His albums feature some of Britain's top jazz musicians, but it isn't straight-up jazz. It's an odd mix of jazz, creaky chamber music, clunky post-punk, lo-fi Afrobeat, avant-garde folk music and English whimsy.

£19.00 advance / £24.00 on the door  
Bar opens at 7:00 P.M.  
Starts at 8:00 P.M.

## COMEDY

### LYME REGIS COMEDY CLUB

FRIDAY 3 MAY

Four comedians are on the bill for our bargain comedy night! With a big headliner to be confirmed and two support acts alongside resident compere Tom Glover, it's sure to make you laugh out loud.

£12.00 advance / £15.00 on the door

Bar opens at 7:00 P.M.

Starts at 8:00 P.M.



## MUSIC

### MUNGO'S HIFI

SATURDAY 4 MAY

Mungo's Hi Fi is a soundsystem and music production collective based in Glasgow, Scotland. They produce and play music which blends Jamaican influence with contemporary bass music, resulting in a unique take on Ska, Reggae, Dancehall and Dubstep that has made them firm favourites in the underground music scene. With support from Version Girl.

From £15.00. Standing.

Bar opens and starts at 8:00 P.M.



## MUSIC

### THE SHANTY SESSIONS

THURSDAY 9 MAY

Ahoy there—local group The Chantry Buoys sing traditional sea shanties and other well known songs. Join them for a fun sing-along with local drinks, old seafaring melodies, and maritime frolics.

Free event - no tickets

Bar opens and starts at 7:30 P.M.



Proudly supporting The Marine Theatre



01297 443363 (option 2)  
[www.lymebayholidays.co.uk](http://www.lymebayholidays.co.uk)

OVER 300  
PROPERTIES IN  
DEVON & DORSET

**COMMUNITY EVENT / THEATRE**  
**PLAY READING GROUP**

**MONDAY 13 MAY**

Unleash your inner thespian! Would you like to read a part in a play or listen to one read aloud? All ages and backgrounds are welcome at our play reading group. Play titles are shared in advance. It's more fun than a Book Group with no homework to feel guilty about forgetting. This month's play is *Sense and Sensibility* adapted from Jane Austen's novel by Emma Thompson.

Free event  
Starts at 7:00 P.M.



**COMEDY**

**RICH HALL:**  
**SHOT FROM CANNONS**

**WEDNESDAY 15 MAY**

Fresh on the heels of his critically acclaimed memoirs, *Nailing It*, Montana's transatlantic messenger returns with new rants, knife-edge observations, thrilling musical interludes and an ever-formidable knack for laughs on the fly. You'll pay for the whole seat, but you'll only need the edge of it.

£18.00 advance / £22.00 on the door  
Bar opens at 7:00 P.M.  
Starts at 8:00 P.M.



**MUSIC**  
**TALISK**

**THURSDAY 16 MAY**

One of the most talked-about folk bands of the 21st century, Talisk have been tearing apart stereotypes and redefining the genre for almost a decade. With over 15 million streams, 10,000 albums sold worldwide, and sold out shows across five continents - from Paris to New York, London to Tokyo, Glasgow to Vancouver - alongside headline appearances at festivals the world over, the Scottish trio have amassed a global, die-hard following. Wielding instruments that have rarely seen the likes of their music, Mohsen Amini (concertina), Benedict Morris (violin) and Charlie Galloway (guitar) have stacked up major awards for their explosively energetic sound - including five between BBC Radio 2 and BBC Radio Scotland, and two highly coveted BBC Alba Scots Trad Music Awards.

£19.00 standing / £22.00 on the door  
Bar opens at 7:00 P.M.  
Starts at 8:00 P.M.





## MUSIC

### JO HARMAN + BAND

**SATURDAY 18 MAY**

Dubbed the UK's "best female soul/blues voice", Jo Harman is a multi million streaming, award winning artist. She's sung with soul superstars like Michael McDonald (Doobie Brothers) and the late Motown legend Lamont Dozier and performed at prestigious festivals and venues around the world. Jo is a unique talent fusing blues, gospel, soul, country and rock. Put simply - she'll blow you away!

*"One of the finest singers this country has to offer!"* – Rag N Bone Man.

£21.00 advance / £10.00 under 18s

£26.00 on the door

Bar opens at 7:00 P.M.

Starts at 8:00 P.M.

## MUSIC

### SALT LINES

**MONDAY 20 MAY**

Taking audiences by storm is a Prose and Music collaboration between bestselling author Raynor Winn and folk-roots supergroup The Gigspanner Big Band, which features some of the most celebrated names on the British folk scene. Together they have created an emotional odyssey which explores the beauty, stories and traditions of the South West Coast Path.

£29.00 advance / £35 on the door

Bar opens at 7:00 P.M.

Starts at 7:30 P.M.



## CINEMA

### 42ND STREET THE MUSICAL

**TUESDAY 21 MAY**

The legendary Broadway musical theatre classic, is a 'glorious' (Express) and 'utterly moreish extravaganza of glitz' (Times). Telling the story of Peggy Sawyer, a talented young performer with stars in her eyes who gets her big break on Broadway, this is the largest ever staging of the Tony Award-winning musical and it was filmed live at the magnificent Theatre Royal in the heart of London's West End.

£10.00 advance / £12.00 on the door

Bar opens at 1:00 P.M.

Starts at 2:00 P.M.

Whether you live at number **18** or **58**,  
we can find you the best buyer

Bridport 01308 422092  
Axminster 01297 33122



Symonds & Sampson

Property advice since 1858



## COMEDY

### ROSIE HOLT: THAT'S POLITAINMENT!

WEDNESDAY 22 MAY

Acclaimed comedian, actor and satirist, whose popular videos on social media have achieved more than 6.5 million views. She is the host of the podcast Nuncensored, and has been seen/heard on The Russell Howard Hour (Sky Max), and BBC Radio 4's The News Quiz, DM's Are Open, and Ashley Blaker 6.5 Children, among many other credits. Holt is now back on tour and coming to Lyme Regis with her sensational new show to tightrope the thin line between politics and entertainment.

£20.00 unreserved seating

Bar opens at 7:00 P.M.

Starts at 8:00 P.M.

## THEATRE

### SHERLOCK'S EXCELLENT ADVENTURE

THURSDAY 23 MAY

Our Star Theatre Company present their acclaimed comedy, following sell-out runs at Brighton and Edinburgh Fringes, and three UK-wide tours. Follow Sherlock Holmes and his incomparable sidekick Dr John Watson on this riveting, hitherto unpublished case...

£16.00 advance / £14.00 students

Bar opens at 6:30 P.M.

Starts at 7:30 P.M.



## MUSIC

### ALABAMA 3

FRIDAY 24 MAY

This unique band has never feared the reduction of their technology. Consequently, Alabama 3 is brave enough to go out on the road armed only with a battered acoustic guitar and harmonica, preaching Guthrie's word that 'this machine kills fascists.' In homage to the classic delta blues slide players like Mississippi Fred McDowell, Howlin' Wolf, John Lee Hooker and their own Rockfree Base, they present their narco-acoustic slant on Alabama 3 and the music that has inspired them along the way.

£20.00 early bird / £24.00 advance

£28.00 on the door

Bar opens at 7:00 P.M.

Starts at 8:00 P.M.



## MUSIC

### L TJ BUKEM

SATURDAY 25 MAY

Groundbreaking DJ? OK: LTJ Bukem is the man who took the drum and bass concept from a small venue off London's Charing Cross Road to the nation's superclubs and then onto the international stage.

From running sound systems to cutting up breaks at raves, from relocating the heart of breakbeat culture to redefining the spirit of drum and bass, the man known to his friends as Danny has sat at the forefront of breakbeat evolution, lighting the way with little more than a zest for life and a love of the music. With support from John Doe and Korridor Kru.

From £18.00. Standing. 18+  
Bar opens and starts at 8:00 P.M.

## MUSIC

### THE SUNDAY SESSIONS

SUNDAY 26 MAY

This regular free entry event is the Marine's dedicated time to promote quality live music—our post-roast music session. Enjoy local drinks and the best musicians. If you'd like to play, just turn up!

Free event - no tickets  
Starts at 2:00 P.M.



## MUSIC

### JAZZ BY THE SEA: 'TAKE LOVE EASY' - THE MUSIC OF ELLA FITZGERALD

SUNDAY 26 MAY

Fifty years ago, Ella Fitzgerald, the 'First Lady of Song', and virtuoso guitarist Joe Pass recorded 'Take Love Easy' - beginning a series of legendary duet albums. To celebrate these iconic recordings vocalist Nina Clark and guitarist Sam Dunn bring you an evening of swinging, joyful and tender music from their songbook.

£14.00 advance / £16.00 on the door  
Bar opens at 7:00 P.M.  
Starts at 8:00 P.M.

# Smile with **confidence**



with  
**dental implants**



## The benefits of dental implants:

- They look, feel and perform like natural teeth
- They can boost your self-confidence
- They offer stability and comfort
- They won't affect your healthy teeth
- No adjustments are needed to other teeth to secure them



## Free implant consultation

“ Exceptional care and professionalism by all at this clinic, also friendly and attentive, highly recommend the clinic. ”

Patient testimonial

Call our **Lyme Bay practice** on **01297 808825**  
or visit **[lymebaydentistry.co.uk/implants](http://lymebaydentistry.co.uk/implants)**



**LYME BAY**  
DENTAL & IMPLANT CLINIC



## COMEDY

### LYME REGIS COMEDY CLUB

SATURDAY 1 JUNE

Four comedians are on the bill for our bargain comedy night! Laura Lexx headlines: as well as appearing on the Live at the Apollo Christmas special, she starred in At The Edinburgh Festival (BBC Two), The Comedy Club (BBC Radio 4 Extra), and The Jason Manford Show (Absolute Radio). Following a critically-acclaimed run of her show Trying last year, Laura won Best Performer in the Comedian's Choice Awards and was in the top 10 of Dave's Funniest Joke at Edinburgh Fringe. With two support acts and resident compere Tom Glover, it's sure to make you chuckle.

£12.00 advance / £15.00 on the door  
Bar opens at 7:00 P.M.  
Starts at 8:00 P.M.

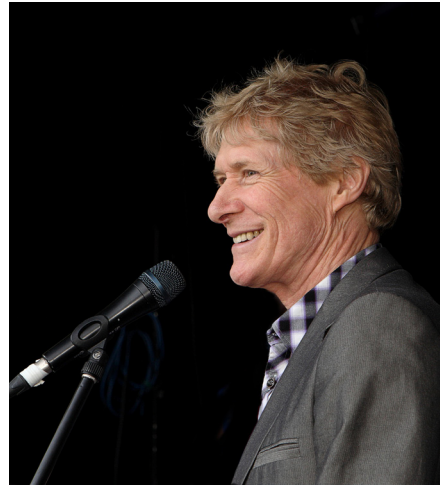
## CINEMA

### EXHIBITIONS ON SCREEN: MY NATIONAL GALLERY LONDON

TUESDAY 4 JUNE

One of the greatest art galleries in the world. Full of masterpieces, an endless resource of history, an endless source of stories. But whose stories are told? Which art has the most impact and on whom?

£10.00 advance / £12.00 on the door  
Bar opens at 1:00 P.M.  
Starts at 2:00 P.M.



## MUSIC

### PAUL JONES AND DAVE KELLY

TUESDAY 4 JUNE

A guitar, harmonica, two authentic, thrilling blues voices and an enviable repertoire of songs and reminiscences most musicians can only dream of. The lead singer of Manfred Mann and The Blues Band is joined by the guitarist who played with John Lee Hooker and Howlin' Wolf.

£25.00 early bird / £30.00 standard  
£35.00 on the door  
Bar opens at 6:30 P.M.  
Starts at 7:30 P.M.



## MUSIC

### SAM SWEENEY

WEDNESDAY 5 JUNE

Following the colossal success of supporting Bellowhead on their comeback tour in 2022, Sam is taking to the road to play his genre-defying landmark album, *Escape That*, with his all-star band. Featuring Louis Campbell on electric guitar, Ben Nicholls on double bass and Archie Moss on acoustic guitar, this will be a gig you don't want to miss.

£21.00 advance / £25.00 on the door

Bar opens at 6:30 P.M.

Starts at 7:30 P.M.

## CINEMA

### THE LONGEST DAY

THURSDAY 6 JUNE

Lyme Regis will join with communities throughout the United Kingdom and Overseas Territories to commemorate the 80th anniversary of D-Day, the largest naval, air and land operation in history. A programme of events is planned in Lyme Regis to mark the anniversary, including a free film screening of *The Longest Day* here. The 1962 film tells the story behind the D-Day landings at Normandy from both the Allied and German points of view.

Free, but please book.

Bar opens at 1:00 P.M.

Starts at 2:00 P.M.



## MUSIC

### THE SHANTY SESSIONS

THURSDAY 6 JUNE

Ahoy there—local group The Chantry Buoys sing traditional sea shanties and other well known songs. Join them for a fun sing-along with local drinks, old seafaring melodies, and maritime frolics.

Free event - no tickets

Bar opens and starts at 7:30 P.M.

A Little 'La Dolce Vita'  
IN LYME

★ Pre-Theatre Meal Deal ★

Join us for a delicious wood-fired pizza,  
green salad and drink\* for only £20

Friendly welcome | Terrace with Sea Views | Authentic Roman Pizza

29 Marine Parade | 01297 598591 | [www.pocopizza.co.uk](http://www.pocopizza.co.uk)

\*Pizza from main menu only. Drink = beer, glass of wine or soft drink

★  
**POCO**  
A Taste of Italy



FREE  
LOCAL  
DELIVERY

NEW

WINE  
SUBSCRIPTIONS  
AVAILABLE

# INDEPENDENT WINE SHOP

Classic, organic & natural wines  
with character

[selectedgrapes.co.uk](http://selectedgrapes.co.uk)

 [selectedgrapes](https://www.instagram.com/selectedgrapes)

BEHIND THE POLICE STATION:

Unit 88, St Michael's Trading Estate, Bridport  
DT6 3RR • 01308 427177



**COMMUNITY EVENT**  
**FOSSIL FESTIVAL**

**SATURDAY 8 & SUNDAY 9 JUNE**

We look forward to welcoming fossil enthusiasts of all ages as part of the family friendly festival here and across the town. Visitors can look forward to Expert Talks, Exhibitions & Educational Activities, Guided Walks, Author Talks & Book Signings, Creative Workshops, Street Performances and much, much more! See website for more details, which were unavailable at the time of print.



**THEATRE**  
**THE DINOSAUR TIMEWARP**  
**A DINOSAUR PANTO**

**SUNDAY 9 JUNE**

Are you ready for the journey of a lifetime? Join us on this exciting, unmissable, and fully interactive Jurassic Panto style adventure filled with music, fun and laughter along the way. An unforgettable dinosaur themed stage show for all the family. Can you roar like a dinosaur and help us return Terry The T Rex to the past? Would you like to meet a baby T Rex in person? Then why not join Babsy and the team after the show and have a photo with our friendly Baby Dino Rex. It's going to be Roar..some!

£11.00 advance  
Starts at 1 P.M. and again at 3 P.M.



**THEATRE**  
**A MIDSUMMER**  
**LYME'S DREAM**

**12-15 JUNE**

An irreverent, modern-day blast through Shakespeare's most enchanting comedy, interwoven with nuggets of Lyme's history. The magical charm of both the play and the town are knitted together to produce another unmissable community event. Welcome to 'A Midsummer Lyme's Dream', a captivating new play created by the community for the community!

From £8.00  
Bar opens at 6:30 P.M.  
Starts at 7:30 P.M.

**COMMUNITY EVENT / THEATRE**  
**PLAY READING GROUP**

**MONDAY 17 JUNE**

Unleash your inner thespian! Would you like to read a part in a play? Would you like to listen to a play being read aloud? All ages and backgrounds are welcome at our play reading group. Play titles are shared in advance. It's more fun than a Book Group with no homework to feel guilty about forgetting. This month's play is *The real Inspector Hound*, by Tom Stoppard.

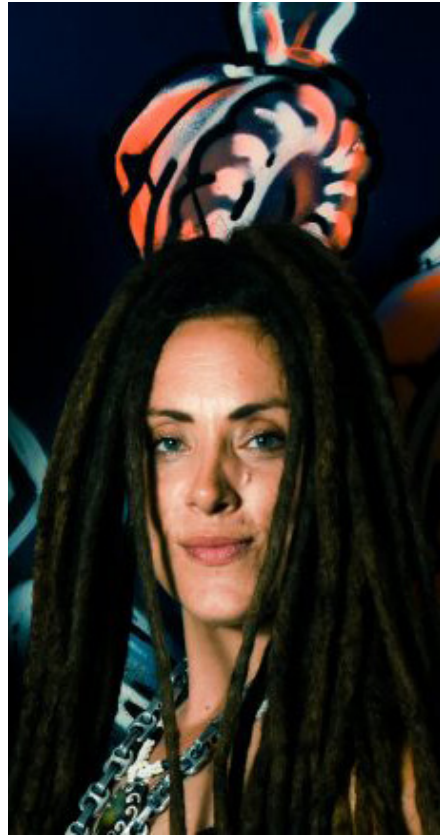
Free event  
Starts at 7:00 P.M.



**COMEDY / THEATRE**  
**LIVING SPIT PRESENTS**  
**ADOLF AND WINSTON**  
**THURSDAY 20 JUNE**

Two Actors. Two World Leaders. One Black Dog. Riotous, rebellious and ridiculously rib-tickling by turns, Living Spit's Adolf and Winston leaves other two-man comedic, musical retellings of the history of the second war in the shade, and poses the question: "who thought this was a good idea, again?"

£16.00 advance / £20.00 on the door  
Bar opens at 6:30 P.M.  
Starts at 7:30 P.M.



**MUSIC**  
**ZION TRAIN**  
**FRIDAY 21 JUNE**

One of the most unique and enjoyable live dub acts on the planet, their use of dynamic onstage dub mixing whilst performing alongside acoustic instruments and exceptional vocalists, make Zion Train one of a kind. Celebrated 30 years existence in 2018 – continuously moving forward with positivity. The band have played well over 3000 shows including Woodstock (Poland), Fusion Festival (Germany), Boomtown (UK) and Glastonbury Festival (UK) 15 TIMES! With support.

£18.00 advance / £23.00 on the door  
Bar opens at 7:00 P.M.  
Starts at 8:00 P.M.



Enjoy our little Oasis with fabulous views.  
Join us for Breakfast, Lunch, Afternoon Tea and Dinner

01297 442010 : [www.hotelalexandra.co.uk](http://www.hotelalexandra.co.uk)



[www.eatfestivals.org](http://www.eatfestivals.org)



**LYME REGIS**  
Local Food & Drink

**SAT 27 APRIL**

Seafront & Gun Cliff Walk  
Lyme Regis  
10 - 4

Supported:

**Specsavers**





**MUSIC**

**FLORENCE ADOONI**

**SATURDAY 22 JUNE**

A real gospel choir from West Africa here in Lyme Regis, led by the Ghanaian Queen of Frafra! Florence Adooni combines the meandering melodies of the Frafra gospel over the high-life rhythm of the Ashanti with incredible ease.

£17.00 early bird / £19.00 standard

£24.00 on the door

Bar opens at 7:00 P.M.

Starts at 8:00 P.M.

**MUSIC**

**THE SUNDAY SESSIONS**

**SUNDAY 23 JUNE**

This regular free entry event is the Marine's dedicated time to promote quality live music—our post-roast music session. Enjoy local drinks and the best musicians. If you'd like to play, just turn up!

Free event - no tickets

Starts at 2:00 P.M.



**THEATRE**

**THE HANDLEBARDS: THE COMEDY OF ERRORS**

**THURSDAY 27 JUNE**

Pedalling from venue to venue with all of their set, props and costumes on the back of their bikes, the HandleBards are a four-strong troupe of actors who are spending the summer bringing environmentally sustainable Shakespeare to venues across the UK. Join the troupe at the Marine Theatre for a bicycle-powered production of Shakespeare's 'The Comedy of Errors' like you've never seen before.

£16.00 advance / £20.00 on the door

Bar opens at 6:00 P.M.

Starts at 7:00 P.M.



## MUSIC

### BERNARD BUTLER

FRIDAY 28 JUNE

Noted as one of Britain's most original and influential musicians. In 1989 Bernard Butler formed Suede releasing the Mercury winning No.1 debut "Suede" and the era-defining "Dog Man Star". His collaboration with David McAlmont on the anthemic "Yes" provided an intriguing footprint across Britpop's otherwise jingoist landscape culminating in 2 albums and a sell out at London's Roundhouse in 2015.

From £21.00  
Bar opens at 7:00 P.M.  
Starts at 8:00 P.M.

## MUSIC

### THE GREAT GATSBY PARTY

SATURDAY 29 JUNE

The Woodroffe Parents, Teachers and Friends Association (PTFA) is celebrating 100 years of secondary education in Lyme Regis. It's hosting a Great Gatsby Party at the Marine Theatre. Style it up with your 1920s frocks and waistcoats and join us to celebrate this historically significant anniversary, with live music and more.

£15.00 advance  
Bar opens and starts at 8:00 P.M.



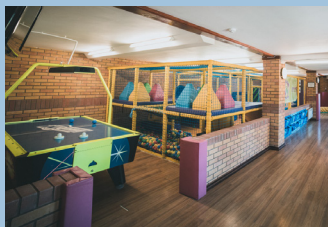
## MUSIC

### JAZZ BY THE SEA - CELEBRATING MILES DAVIS

SUNDAY 30 JUNE

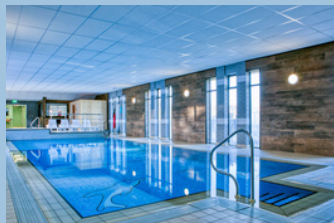
Sam Massey will be performing some pieces composed by Miles Davis like All Blues, and many associated with Davis over his career, such as Stella by Starlight. Described by The Guardian as a "fine trumpet player" Massey will be accompanied by Philip Clouts at the piano and John Donnelly on double bass.

£14.00 advance / £16.00 on the door  
Bar opens at 7:00 P.M.  
Starts at 8:00 P.M.



**Our onsite Leisure Centre has a fully equip gym, an indoor pool with sauna and hot tub facilities & an outdoor pool with toddler splash zone!**

**Sessions for the gym or a swim start from £5 & 2 years and under swim free.**



**Join us in The Tow Bar & Restaurant after your visit to the leisure centre.**

**We serve breakfast, lunch and evening meals daily, no need to book.**

**The bar is open all day serving drinks and snacks which can be enjoyed in our conservatory or on our sun terrace.**



Scan the QR code for more information on all our facilities

**Traditional Sunday Carvery All welcome Booking advisable**

Charmouth, Dorset DT66RB

T: 01297 560259 E: [enq@newlandsholidays.co.uk](mailto:enq@newlandsholidays.co.uk) [www.newlandsholidays.co.uk](http://www.newlandsholidays.co.uk)



@newlandsholiday



@newlandsholidays

THE  
HONITON  
EYE  
CLINIC

# NEW PATIENTS, WELCOME!

As your **independent local opticians** we are very excited to welcome you!

[www.honitoneyeclinic.co.uk](http://www.honitoneyeclinic.co.uk)

THE  
HONITON  
EYE  
CLINIC

**KT**  
LAW **KITSON &  
TROTMAN**

[www.ktlaw.co.uk](http://www.ktlaw.co.uk)

## LEGAL ADVICE AND SERVICES FOR LIFE

- PROPERTY • WILLS & PROBATE • FAMILY MATTERS
- BUSINESS & AGRICULTURE • DISPUTE RESOLUTION • EQUINE

THEATRE  
TICKET

LYME REGIS 01297 442580 | BRIDPORT 01308 427436  
BEAMINSTER 01308 862313 | WEYMOUTH 01305 341400



# BECOME A MEMBER

## SUPPORT THE MARINE AND SAVE MONEY

For just £35 a year, receive 10% off your ticket and in our bars, invites to special events, and more.

You'll also be helping to support the Marine.

There are different levels of membership:

**SEA-VENTURE** - one year  
Single £35 / Joint £50

**PROSPERO** - three years  
Single £90 / Joint £135

### BENEFITS

- 10% off your ticket for most events
- 10% discount at our bars
- 10% off at selected restaurants (see website for terms)
- Invitation to season launch events

To become a member please join online at [marinetheatre.com](http://marinetheatre.com).

