

# MARINE THEATRE

LYME REGIS

OCTOBER—DECEMBER 2019

MUSIC • COMEDY • THEATRE  
SCREENINGS • CINEMA



TICKETS: [MARINETHEATRE.COM](http://MARINETHEATRE.COM)  
01297 442138

## WELCOME

We're excited to be welcoming sixties pop star Paul Jones with The Blues Band in November—it's already sold out!

But theatre takes centre stage this Autumn with two very special community plays full of talented local performers. Our patron—screenwriter Andrew Rattenbury—has worked on some of the most popular programmes on television, including EastEnders and Doc Martin. His play celebrating our 125 anniversary takes place in December; it's a love story set against the backdrop of our fascinating history.

In October, our beloved Marine Players present A Tomb With A View—Norman Robbins' darkly comic play about inheritance in a hilarious family.

Another event with a sinister edge, is Nosferatu on Halloween. The Arrantz Ensemble is playing a new musical score live for the highly influential 1920s silent horror film.

The Tony-award winning musical 42nd Street couldn't be more different! We're pleased to be screening this exuberant production from the Theatre Royal.

As the evenings get darker, I do hope you can join us for some of our excellent events, and see recent improvements made to the Marine, such as our lovely new Box Office.

## GABBY RABBITTS

Director

## WITH THANKS TO OUR SPONSORS AND PARTNERS:



Dorset  
Council



## TICKETS

### ONLINE

Booking is possible 24 hours a day at [marinetheatre.com](http://marinetheatre.com).

### PHONE

Call Lyme Regis Tourist Information Centre on 01297 442138 to book a ticket over the phone.

### MEMBERS

Members receive 10% off their ticket for most events. Please check for exceptions when booking.

### IN PERSON

Advance tickets are available from the Marine on Wednesdays from 9 A.M. until noon and from Lyme Regis & Bridport Tourist Information Centres during opening hours. On the door tickets are available at the Marine from an hour before each show.

### REFUNDS

Tickets will not be refunded except in the event of a cancellation. Actors and musicians lead complicated lives, so please check our website before making a journey.

## BOOKING FEES

These are not charged by the Marine. The Tourist Information Centres charge 50p on tickets up to £10 and £1 for tickets £10 and over. Online bookings at See Tickets have a 10% booking fee. To avoid a booking fee, tickets can be purchased from the Marine on Wednesday mornings.

## VISITORS' INFORMATION

Normally the bar and box office open an hour before an event starts. Child tickets are for those aged 16 and under. Please check on our website or when booking to see if an event is seated or standing. Seating is generally unreserved.

### ACCESS

Carers may attend free of charge with ticket holders. Seating is normally available at standing gigs for those with limited mobility.

### CONTACT

For further information please visit [marinetheatre.com](http://marinetheatre.com) or call our office on 01297 442394.

## VOLUNTEERING

Whether it's ushering, hosting performers, or even DIY, there are lots of ways to support the running of our busy venue. If you have time to spare and would like to get involved, please email [manager@marinetheatre.com](mailto:manager@marinetheatre.com).

# Welcoming new patients



We are experts in finding solutions  
to your dental needs

Now offering FREE dental consultations!

Contact us today on **01297 808821**

We can offer you:

Dental Implants | General Dentistry

Hygiene Services

Cosmetic Dentistry | Restorative Dentistry

Temple House, 63 Broad Street, Lyme Regis, Dorset DT7 3QF | **01292 808821**  
[lymebaydentistry.co.uk](http://lymebaydentistry.co.uk)

a part of  
**PORTMAN**  
dental care

# From Summer breeze to Autumn leaves

It's not just the seasons that can change this autumn. If you're thinking of moving, let us help you make the move to your new home.

Come in and see us or call

**Bridport office** 01308 422092  
**Axminster** 01297 33122

Symonds  
& Sampson  
ESTABLISHED 1898



[symondsandsampson.co.uk](http://symondsandsampson.co.uk)

propertymatters



## TALK

### ALAN JOHNSON: IN MY LIFE

TUESDAY 1 OCTOBER

With the help from meaningful music in his life, the former Home Secretary tells his personal story from growing up as an orphan in the 50s to becoming a postman, before rising through the Labour Party.

£16.50 advance / £18.00 on the door

Starts at 7:30 P.M.



VERY  
SPECIAL  
EVENT

## CINEMA

### #TREESARETHEKEY

NARRATED BY KATE WINSLET

WEDNESDAY 2 OCTOBER

This is an uplifting environmental documentary from Lyme based reforestation charity, The Word Forest Organisation. The filmmakers argue that we need to plant trees in the tropics and look after people tending rainforests. This is a fundraising event and at least one tree will be planted for every ticket sold. Visit [TreesAreTheKey.com](http://TreesAreTheKey.com) for further information.

£7.50 advance / £9 on the door

Starts at 7:30 P.M.



## SCREENING

### WISE CHILDREN

THURSDAY 3 OCTOBER

Multi-award-winning director Emma Rice brings her unique, exuberantly impish vision to Angela Carter's great last novel in this brand-new theatre production, filmed live. A big, bawdy tangle of theatrical joy and heartbreak, *Wise Children* is a celebration of show business, family, forgiveness and hope, with a generous dash of Shakespeare, scandal and mischief, taking the audience on a rollercoaster ride of emotions.

★★★★★ *'Fantastic. Life-enhancing, brilliantly uninhibited, all-singing and dancing... Stars? I'm not sure why you would stop at five.'* ~ The Observer

£5.00 under 18s advance and on the door

£11.00 advance / £13.50 on the door

Starts at 7:00 P.M.



## TALK

### SEA WHAT'S THERE

WEDNESDAY 9 OCTOBER

Through film, talks, facts, and discussion, four inspirational speakers share the effects of plastic, climate change, and overfishing of our seas. Speakers include Anne Baker, Mission Co-Leader of eXXpedition Round Britain and William Thompson, founder of Tidal Compass & Tide Times series.

Children and students advance £5

Children and students on the door £6

Adults advance £10

Adults on the door £12

Starts at 7:00 P.M.



## CINEMA

### RED JOAN

FRIDAY 11 OCTOBER

Starring Judi Dench, this is the story of Joan Stanley, who was exposed as the KGB's longest-serving British spy.

£6.00 advance / £7.50 on the door

Starts at 7:30 P.M.



## MUSIC / TALK

### THE TRUTH ABOUT MEN:

### SCOTT LAVENE

SATURDAY 12 OCTOBER

This is a musical journey, finding out what it takes to be a man in the modern age. Imagine Ian Dury with a touch of Stephen Sondheim. Scott performed music around Europe and became the front man of many bands. After coming close to a major label record deal, he disappeared for six years before seeking help and arriving in Boscombe, Dorset.

£7.50 early bird / £8 advance

£9 on the door. Starts at 8:00 P.M.





## MUSIC

### THE SUNDAY SESSIONS

**SUNDAY 13 OCTOBER**

This regular free entry event is the Marine's dedicated time to promote quality live music—our post-roast music session. Enjoy local drinks and the best musicians in our lovely bar overlooking the Cobb. If you'd like to play, please just turn up!

Free entry, no tickets.

Bar opens and starts at 3:00 P.M.



## TALK

### DAVID GOWER

### ON THE FRONT FOOT

**TUESDAY 15 OCTOBER**

The legendary former England cricket captain is visiting the Marine; expect tales from captaining his national team, to victory in the Ashes, as well as memories flying a Tiger Moth over Queensland.

£23.00 advance / £26.00 on the door

Starts at 7:30 P.M.



## SCREENING

### NATIONAL THEATRE LIVE: A MIDSUMMER NIGHT'S DREAM

**THURSDAY 17 OCTOBER**

Shakespeare's most famous romantic comedy will be captured live from the Bridge Theatre in London, starring Gwendoline Christie (*Game of Thrones*), and Oliver Chris (*Green Wing*, *NT Live: Young Marx*).

£5.00 under 18s advance and on the door

£11.00 advance / £13.50 on the door

Starts at 7:00 P.M.



## COMEDY

### DAVE JOHNS:

### FROM BYKER TO THE BAFTAS

**SATURDAY 19 OCTOBER**

Dave Johns is a celebrated comic who has made guest appearances on many television programmes. He played the lead in *I Daniel Blake*, Ken Loach's award-winning film, which won the much coveted Palme D'or. *"Shifting from hilarity to uproar to genius in the blink of an eye"* —The Guardian.

£10.00 advance / £12.00 on the door

Starts at 8:00 P.M.



## THE MARINE PLAYERS PRESENT A TOMB WITH A VIEW

WEDNESDAY 23—  
SATURDAY 26 OCTOBER

VERY  
SPECIAL  
EVENT

With a talented local cast of all ages, this is a wickedly dark comedy of family life and inheritance set in a sinister, old library presided over by a portrait of a mad-eyed old man. There, a dusty, lawyer reads a will (involving a vast fortune) to an equally sinister family...one thinks he's Julius Caesar, one brews poisons, and another thinks he's a werewolf.

£6 children, £12 adults advance and on the door. Starts at 7:30 P.M.



## COMEDY

## TOM GLOVER—A GLOVER NOT A FIGHTER

SUNDAY 27 OCTOBER

The resident compere from our popular comedy club has written his debut solo show! Fresh from Edinburgh Fringe, it features his funniest routines as he muses about fatherhood and masculinity in contemporary Britain.

£10.00 advance / £12.00 on the door  
Starts at 8:00 P.M.



## THEATRE

## PAINES PLOUGH PRESENTS I WANNA BE YOURS

MONDAY 28 OCTOBER

Acclaimed poet Zia Ahmed wrote this exciting debut play—a tender and lyrical love story set in contemporary Britain. Zia is from North West London. He is a London Laureate, having been shortlisted to be the Young Poet Laureate for London 2015/16. He is a former Roundhouse Poetry Slam champion. Zia was Paines Plough's Channel 4 Playwright in Residence 2016/2017.

*"That noble company Paines Plough, de facto national theatre of new writing."* ~ The Daily Telegraph

£8 adults advance, £5 under 18s advance,  
£10 adults on the door, £7 under 18s on  
the door. Starts at 7:30 P.M.



HIX

**OYSTER  
& FISH  
HOUSE**

Perched on the hillside with stunning views  
of the Jurassic Coast.

British seasonal fish and seafood from  
Mark Hix.

**10% off the bill  
for pre and post  
theatre meals\***



**Set menu**

Seasonal menu £19.50/23.50  
Tuesday to Friday 12-10pm  
November to March



**Curry Club**

£20  
Tuesday nights  
November to March

Cobb Rd, Lyme Regis DT7 3JP  
[hixrestaurants.co.uk](http://hixrestaurants.co.uk) | 01297 446910  
[reservations@hixoysterandfishhouse.co.uk](mailto:reservations@hixoysterandfishhouse.co.uk)  
[@hixrestaurants](https://www.instagram.com/hixrestaurants)

**\*Must show valid Marine Theatre ticket on arrival for that day.  
Maximum table of 4. Cannot be used in conjunction with any other offer.**



## SCREENING

### GAUGUIN FROM THE NATIONAL GALLERY, LONDON

**TUESDAY 29 OCTOBER**

A new documentary about the life and work of one of the world's most popular and important artists opens this fascinating cinema event, followed by an exclusive private view of the National Gallery exhibition Gauguin Portraits.

£10.00 advance (including cake)  
£12.00 on the door. Starts at 3:00 P.M.



## CINEMA

### TOY STORY 4

**WEDNESDAY 30 OCTOBER**

When a new toy called "Forky" joins Woody and the gang, a road trip alongside old and new friends reveals how big the world can be for a toy.

£4.50 advance and on the door  
Starts at 2:00 P.M.



## MUSIC

### ARCHIPELAGO

**WEDNESDAY 30 OCTOBER**

Inspired by musicians such as Don Cherry and Joni Mitchell, this award-winning Tyneside jazz trio takes audiences on a journey from lyrical melodies, through some experimental moments with great aplomb.

£8.00 advance / £12.00 on the door  
Starts at 8:00 P.M.



**VERY  
SPECIAL  
EVENT**

**CINEMA / MUSIC**

## **NOSFERATU**

**THURSDAY 31 OCTOBER**

For Halloween, the acclaimed Arranz Ensemble is playing a newly composed score live for this silent horror classic. Expect to hear the oboe, bassoon, sax, and more, as it weaves an atmospheric spell around this vampire masterpiece.

£10.00 advance / £12.00 on the door

£6.00 under 18s advance

£8.00 under 18s on the door.

Starts at 8:00 P.M.



**MUSIC**

## **HARBOUR VOICES: THE PULL OF THE TIDE**

**FRIDAY 1 NOVEMBER**

This popular local group presents its new show of traditional shanties alongside original material, bringing to life the region's maritime heritage.

£12.00 advance / £15.00 on the door

Starts at 7:30 P.M.



**CINEMA**

## **VANISHING SAIL**

**SATURDAY 2 NOVEMBER**

To tie in with our Harbour Voices concert, we are showing a special film with a nautical theme: in the Lesser Antilles, Alwyn Enoe decides to build one last sailing sloop to teach his sons the vanishing boat-building trade.

£6:00 advance / £7.50 on the door

£5 for Harbour Voices ticket-holders

(offer not available online)

Starts at 7:30 P.M.



**SCREENING**

## **MATTHEW BOURNE'S ROMEO + JULIET**

**MONDAY 4 NOVEMBER**

The UK's brightest young dance talent perform in this 5 star reimagining of Shakespeare's famous love story, filmed live in Sadler's Wells.

£5.00 under 18s advance and on the door

£11.00 advance / £13.50 on the door

Starts at 3:00 P.M.



## CINEMA

### A SLOW ODYSSEY: THE GREAT WALL OF CHINA WEDNESDAY 6 NOVEMBER

This film is a spectacular aerial journey flying over the world's longest man-made monument. In slow-TV style—without commentary and using authentic location sound—fly from the Yellow Sea in the crowded east, near Beijing, to the remote Gobi Desert in the west. The film will be followed by a Q&A with the Director Eric Harwood. *This is a fundraiser in aid of Uplyme Community Sponsorship.*

£6.00 advance / £7.50 on the door  
Starts at 7:00 P.M.



## SCREENING

### NATIONAL THEATRE LIVE: HANSARD

THURSDAY 7 NOVEMBER

See two-time Olivier Award winners, Lindsay Duncan (*Birdman*, *About Time*) and Alex Jennings (*The Lady in the Van*, *The Queen*), in this brand-new political play by Simon Wood, broadcast live from the National Theatre in London.

£5.00 under 18s advance and on the door  
£11.00 advance / £13.50 on the door  
Starts at 7:00 P.M.



## MUSIC

### TOM SEALS

FRIDAY 8 NOVEMBER

One of the country's most exhilarating Boogie-Woogie pianists returns to Lyme Regis. Tom Seals' hugely entertaining performances have secured him shows at Ronnie Scott's and Birdland Jazz Club on Broadway. He has also worked with the biggest names in jazz and blues, such as Jamie Cullum, Jools Holland, and Gregory Porter.

*"Amazing" ~ Jamie Cullum*

*In partnership with Jazz Jurassica*

£12.00 Early Bird / £15 advance  
£18 on the door. Starts at 7:30 P.M.



## CINEMA

### YESTERDAY

SATURDAY 9 NOVEMBER

A struggling musician realises he's the only person on Earth who can remember The Beatles after waking up in an alternate timeline where they never existed. Directed by Danny Boyle and written by Richard Curtis.

£6.00 advance / £7.50 on the door  
Starts at 7:30 P.M.



MARINE  
THEATRE

LYME REGIS

**Italia**  
Ristorante & Pizzeria

WE ARE PROUD TO BE SUPPORTING THE MARINE THEATRE  
AND OFFER ITS MEMBERS

**10% OFF FOOD**

ON PRODUCTION OF A VALID MARINE THEATRE MEMBERSHIP CARD

TO BOOK A TABLE, CALL US ON 01297442123  
OR EMAIL US ON [BOOKINGS@ITALIALYMEREGIS.CO.UK](mailto:BOOKINGS@ITALIALYMEREGIS.CO.UK)

14-15 MONMOUTH STREET, LYME REGIS, DT7 3PX

FIND US ON:  @ITALIALYMEREGIS  ITALIA RISTORANTE & PIZZERIA



# BEVISS & BECKINGSALE

## SOLICITORS

MOVING HOUSE | COMMERCIAL PROPERTY | WILLS, TRUSTS & ESTATES  
POWERS OF ATTORNEY | RURAL AFFAIRS | MATRIMONIAL & CIVIL LITIGATION

*“Very professional service with  
a personal touch. Thank you.”*

*“All staff were friendly and  
efficient.”*

2019  
 **DEVON & SOMERSET  
LAW SOCIETY**  
LEGAL AWARDS

**WINNER**  
CLIENT EXPERIENCE

Get in touch [www.bevissandbeckingsale.co.uk](http://www.bevissandbeckingsale.co.uk)

Axminster

01297 630700

Chard

01460 269700

Honiton

01404 548050

Seaton

01297 626950





## MUSIC

### THE SUNDAY SESSIONS

SUNDAY 10 NOVEMBER

This regular free entry event is the Marine's dedicated time to promote quality live music—our post-roast music session. Enjoy local drinks and the best musicians in our lovely bar overlooking the Cobb. If you'd like to play, please just turn up!

Free entry, no tickets.

Bar opens and starts at 3:00 P.M.



## COURSE

### MARINE YOUNG TECHNICIANS' PROGRAMME FROM TUESDAY 12 NOVEMBER

Have you ever wanted to work backstage? Starting in November this practical 10-week course is aimed at young people aged 16-24 who want to find out more about lighting, sound, and managing a stage for music, theatre, and other live events. This is an amazing opportunity to gain practical knowledge and experience real technical set-ups from a professional team.

*Scheduled payments and subsidised places are available (for more details please email [manager@marinetheatre.com](mailto:manager@marinetheatre.com)).*

£120. 6-8 P.M.



## MUSIC

### THE CARPENTERS EXPERIENCE

THURSDAY 14 NOVEMBER

This big production brings Close to You, We've only Just Begun, Only Yesterday, and dozens more classic songs to the stage. The UK's leading celebration of the seventies super-duo—featuring the extraordinary voice of Maggie Nestor and eight top-class musicians—captures the sights and sounds of the amazing talents of Richard and Karen Carpenter.

£16.00 early bird / £18.50 advance

£20.50 on the door

Starts at 8:00 P.M.



## MUSIC

### THE BLUES BAND

**FRIDAY 15 NOVEMBER**

*Sold out!*

2019 sees The Blues Band celebrate their 40th year together: Paul Jones, Dave Kelly, Tom McGuinness, Rob Townsend, and Gary Fletcher.

Starts at 8:00 P.M.



## COMEDY

### LYME REGIS COMEDY CLUB WITH STEPHEN CARLIN

**SATURDAY 16 NOVEMBER**

Our regular comedy night sees a headline set from Stewart Lee's support act Stephen Carlin. Tom Glover is the resident compere, with support from Josh Pugh and James Cook.

£8.00 advance / £10.00 on the door

Starts at 8:00 P.M.



## MUSIC

### THE SIMMERTONES

**FRIDAY 22 NOVEMBER**

One of the UK's leading authentic ska and reggae bands: *'This Simmertones album is so uplifting! Hypnotic, thirst inducing tunes.'* Lee Thompson, Madness. *Support from DJ Ska Au Go Go*

£8 advance / £10 on the door

Starts 8:00 P.M.



## MUSIC / TALK

### JOHN ILLSLEY: THE LIFE AND TIMES OF DIRE STRAITS

**SATURDAY 23 NOVEMBER**

This is a special evening with Q&A and live music from the famous bass player. Along with Mark Knopfler, John was a founder member of the legendary band Dire Straits who, during their time together, sold over 120 million albums.

£28.00 advance / £32.00 on the door

Starts at 8:00 P.M.



## MUSIC

### ISQ JAZZ WORKSHOP

SUNDAY 24 NOVEMBER

Led by critically-acclaimed jazz quartet ISQ, this practical workshop is open to anyone with an interest in jazz and improvisation. *In partnership with B Sharp.*

£5.00 advance / £7.00 on the door

£12.00 advance concert and workshop combined ticket. Starts at 5:00 P.M.



## MUSIC

### ISQ "REQUIEM FOR THE FAITHFUL"

SUNDAY 24 NOVEMBER

This is a celebrated outfit from London featuring a stellar line-up of big jazz musicians: Irene Serra (vocals - Wynton Marsalis, Norma Winstone, US3), Richard Sadler (double bass - founding member of the Neil Cowley Trio), Naadia Sheriff (piano - Yazz Ahmed, Hermeto Pascoal) and Chris Nickolls (drums - Andy Sheppard, Jean Touissant).

£8.00 advance / £12.00 on the door  
Starts at 8:00 P.M.



## SCREENING

### 42ND STREET

FRIDAY 29 NOVEMBER

This Broadway musical theatre classic, is a 'glorious' (★★★★★ Express) and 'utterly moreish extravaganza of glitz' (★★★★★ Times). Telling the story of Peggy Sawyer—a talented young performer who gets her big break on Broadway—this is the largest ever staging of the Tony Award-winning musical, filmed live at the Theatre Royal.

£5.00 under 18s advance and on the door

£11.00 advance / £13.50 on the door  
Starts at 7:00 P.M.



## THEATRE

### MOONBEAM ON A CAT'S EAR

SATURDAY 30 NOVEMBER

Based on the book by author and illustrator Marie-Louise Gay, Moonbeam on a Cat's Ear (Voyage au Clair de Lune) is a visual journey into an exciting world of dreams and imagination for children aged 3 and over.

£7.00 adults / £6.00 children

£20.00 family (2 adults and 2 children)  
Starts at 2:00 P.M.



## SCREENING

### NATIONAL THEATRE LIVE: PRESENT LAUGHTER

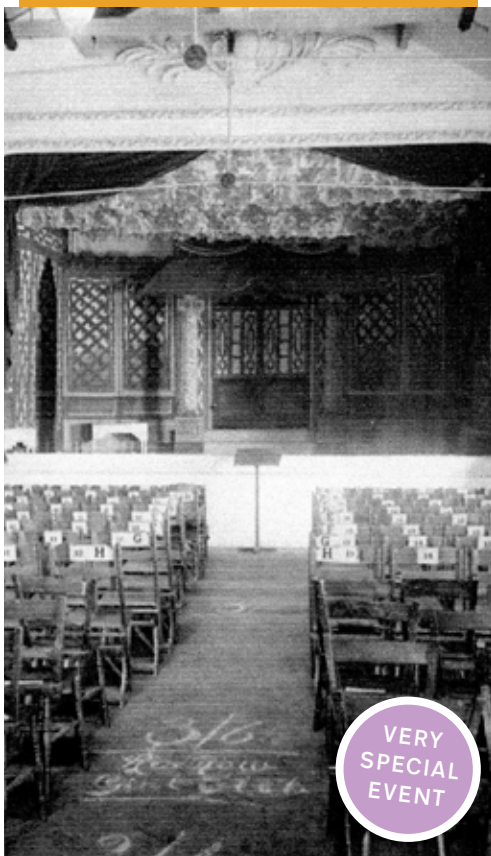
SUNDAY 1 DECEMBER

Matthew Warchus directs Andrew Scott (Sherlock, Fleabag) in Noël Coward's provocative comedy about boyish vanity. *'A virtuosic performance'* ~ The Guardian

£5.00 under 18s advance and on the door

£11.00 advance / £13.50 on the door

Starts at 7:00 P.M.



VERY  
SPECIAL  
EVENT

## THEATRE

### ARE YOU GOING TO THE MARINE?

THURSDAY 5 DECEMBER -

SATURDAY 7 DECEMBER

Join us as we celebrate one hundred and twenty five years of the Marine, in this special community play, written by Andrew Rattenbury. With the help of the thriving local theatre, music, and drama groups, who have all performed here over the past century or so, we'll be looking back at our rich history as seen through the eyes of two young lovers.

£3 children, £6 adults advance

£5 children, £7 adults on the door

Starts at 7:30 P.M.



VERY  
SPECIAL  
EVENT

## POETRY

### PAM AYRES: UP IN THE ATTIC

MONDAY 2 DECEMBER

One of the nation's favourite and well-loved poets visits Lyme Regis for the first time in her 40-year career to talk about her new book of poetry, Up In The Attic, and to sign copies.

£10.00 advance and on the door

Starts at 3:00 P.M.





## MUSIC

### JAZZ IN THE BAR: CHRISTMAS WITH CHARLIE BICKNELL

**SUNDAY 8 DECEMBER**

This local diva will be singing a special festive programme at our Jazz in the Bar. Charlie first became a household name playing Delilah in BBC2's This Life, and subsequently starred as Scout in Ben Elton's West End hit Popcorn.

£8.00 advance / £12.00 on the door  
Starts at 8:30 P.M.



## SCREENING

### THE WINTER'S TALE

**THURSDAY 12 DECEMBER**

Judi Dench and Kenneth Branagh star in Shakespeare's timeless tragicomedy of obsession and redemption, reimagined in this production filmed live at London's Garrick Theatre in 2015.

£5 under 18s advance and on the door  
£11 advance / £13.50 on the door  
Starts at 7:00 P.M.



## CINEMA

### POLAR EXPRESS PYJAMA PARTY

**SATURDAY 14 DECEMBER**

Get up, get on, and get ready for the ride of your life! Starring Tom Hanks: on Christmas Eve, a young boy embarks on a magical adventure to the North Pole on the Polar Express. Father Christmas and the Station Master will appear in person, and audience members are invited to wear pyjamas for a fun event for all.

£4.50 advance and on the door  
Starts at 2.00 P.M.



## COMEDY

### LYME REGIS COMEDY CLUB WITH LAURA LEXX

**SATURDAY 14 DECEMBER**

Multi award winning comedian and star of Live at the Apollo Laura Lexx headlines the Christmas comedy club, with support from Jon Wagstaffe and Morgan Rees. Tom Glover is the host at this bargain night out.

£8.00 advance / £10.00 on the door  
Starts at 8:00 P.M.





## MUSIC

### THE SUNDAY SESSIONS

SUNDAY 15 DECEMBER

This regular free entry event is the Marine's dedicated time to promote quality live music—our post-roast music session. Enjoy local drinks and the best musicians in our lovely bar overlooking the Cobb. If you'd like to play, please just turn up!

Free entry, no tickets.

Bar opens and starts at 3:00 P.M.



## MUSIC

### THE JERSEYS—OH WHAT A NITE!

THURSDAY 19 DECEMBER

We celebrate the timeless music of Frankie Valli & The Four Seasons. Incredible Falsettos, beautiful acapella singing, and authentic harmonies of the 60s and 70s—that's The Jerseys. Expect all the hits including Sherry, Walk Like A Man, and Grease.

£16.00 advance / £18.00 on the door  
Starts at 7:30 P.M.



## CINEMA

### WHITE CHRISTMAS

SATURDAY 21 DECEMBER

Our annual free yuletide film for the community is Irving Berlin's classic musical from 1954. It's the highest grossing musical of all time in which a successful song-and-dance team become romantically involved with a sister act and team up to save the failing Vermont inn for their former commanding general. A series of romantic mix-ups ensue as the performers try to help the General. The film stars Bing Crosby, Danny Kaye, Rosemary Clooney, and Vera-Ellen. It features the songs Sisters, Count Your Blessings, and—of course—the famous White Christmas.

Free entry, ticketed. Tickets are not available online for this event.  
Starts at 7:30 P.M.

# MEMBERS GET MONEY OFF

For just £25 a year, receive 10% off your ticket and in our bars, invites to special events, and more.

You'll also be helping to support the Marine.

There are different levels of membership:

**SEA-VENTURE** - one year  
Single £25 / Joint £35

**PROSPERO** - three years  
Single £65 / Joint £95

## BENEFITS

- 10% off your ticket for most events
- 10% discount at our bars
- 10% at Italia Ristorante & Pizzeria
- Bring a friend for free to two events per season (applies to Prospero only)
- Invitation to season launch events
- Monthly email newsletter
- The quarterly programme posted to you
- Reciprocal membership of Bridport Arts Centre and Dorchester Arts

To become a member please join online at [marinetheatre.com](http://marinetheatre.com), call 01297 442394, or pick up a form at the Marine.

