



# MARINE LIFE

THEATREFRIENDS NEWS



Volume 3, Issue 1  
Autumn 2008

## TF Fundraising Film - Thursday 5 March

Sometimes, a little piece of luck just drops into one's pocket. When this happens it is a good idea to make the best of the opportunity. So when, during the Flamenco evening back in the not so sunny August, a new Theatre-Friend offered to show one of his films and chat to the audience afterwards in order to raise funds for us – what could I do but say **YES PLEASE!**

The someone was BAFTA award winning writer/director, Peter Duffell.

In 1981 he was awarded a BAFTA for his direction of the BBC2 Playhouse, *Man in a Suitcase* (1980). In 1973,



Peter Duffell directed and co-wrote the film *England Made Me*. The following year it was nominated for a BAFTA. The Channel 4 Film review stated: *'An underrated adaptation of Graham Greene's novel'*.

Philip Evans, Editor of *The View From Lyme* and associated publications, will be interviewing Peter after the film then taking questions from the audience.

To ensure we have a pleasant and sociable evening, the ticket price includes a free glass of wine and some cheese. This will also make a great opportunity to welcome Peter and his wife Ros to Lyme Regis.

Tickets available from the TIC **£7 (£5 for TF Members)**

**Doors open: 7.30pm Film starts: 8.00pm**

## Fantastic job!



Our Theatre Manager, Nigel Day, has asked me to express his gratitude to those of you who volunteered to help redecorate and tidy the theatre during our 'dark' period in January.

He is thrilled with the help he received and has told me so several times! He was probably trying to make me feel guilty as I did not show up once, I was rather involved with my own decorating deadline. Thankfully, many others showed more dedication and the theatre looks a lot better for a coat of paint and some new, matching curtains leading to the auditorium.

I'll tell you another thing, there is no fear of nodding off in the Ladies' and missing the show. You'll see what I mean!

## From a warm welcome to a fond farewell

2009 has already seen major changes begin at the Marine. The Theatre Trustees held a party to welcome the new Creative Director, Ian Stephens. It was a very pleasant way to spend a Sunday morning and it was a great opportunity to show off the refreshed theatre to our Mayor, Sally Holman, and other council members.



From left to right: Ian Stephens, John Bartholomew and Denis Yell

Ian brings a rich and broad experience in the world of theatre. His humorous and inspiring speech gave us all much hope for the future. Everyone I spoke to expressed their confidence in Ian's ability to take the Marine Theatre forward into the future and drive its development as our community theatre.

Delicious canapés and good quality wine soon helped to create a convivial atmosphere. Theatre volunteers had also been invited to the occasion, not only as an opportunity to meet our new charismatic

Creative Director, but as a mark of appreciation for all the hours given to man the ticket office, coffee bar and to work in the Front of House team. The Chair of LACT, John Bartholomew, stated that he and his fellow trustees were very appreciative of the reliable band of people who answered the ever increasing cries for urgent help.

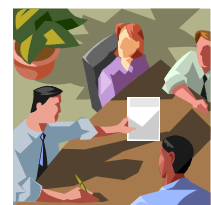
This joyous occasion was tinged with some sadness, however. The event also gave the opportunity to publicly thank Lorna Jenkin for her 9 years of dedication and hard work as a Trustee. During this time Lorna has experienced occasions when the future of the theatre was under

real threat and recalled the time that it was almost raised to the ground to be replaced with a housing estate. Feeling the Marine is now in safe hands, she has finally decided to take a well earned rest. John presented Lorna with Lawrence Anholt's colourful and fun painting of the Marine Theatre afloat in Lyme Harbour. You will have noticed this stunning design on the front cover of the last theatre brochure.



Lorna, we wish you well and cannot thank you enough for your contribution.

## Can you help?



Would you consider joining our committee?

The TheatreFriends committee could do with some much needed assistance. We meet for a couple of hours a month & do some extra hours when we run an event, further time is optional and flexible. You do not have to have a particular skill (although we would not turn it down!), enthusiasm and general help is just as crucial.

Contact: Jenny Waldron on 01297 444756



## THEATREFRIENDS NEWS

### Marine Theatre

Church Street, Lyme Regis DT7 3QA

**Phone:** Theatre Office: 01297 442394

**Website:** www.marinetheatre.com

**E-mail:** admin@marinetheatre.com

### THEATRE TICKETS

**Box Office: 01297 442138**

Or call in person to:

West Dorset Tourist Information Centre, Guildhall Cottage, Church Street, DT7 3BS

## On The Razzle

And now for something different! Lyme Regis Dramatic Society is delighted to present a rollicking period comedy by Tom Stoppard—"On the Razzle". The story on which "Hello Dolly" was loosely based, the play tells the story of a pair of downtrodden shop assistants who grab their chance to sample the bright lights of 1890s Vienna trying to avoid their curmudgeonly boss and hoping to SEE LIFE! Their adventures bring them into encounters with many colourful characters including enticing ladies, the law, a lusty coachman, a French maid—and others. This is a colourful production with a large cast, a clever (sometimes bawdy) script and much visual humour.



The production runs from 22nd to 25th April, curtain up at 7.30 pm.

Tickets at £7.50 & £6.50 (under 16s) available from early April from the Tourist Information Office, 01297 442138.

## Looking Ahead

Having only just finished all manner of jobs around the inside of the theatre during our 'dark period' in January, our Nigel has now turned his attention to matters on the outside. At our recent TF monthly committee meeting, he outlined his plans for improving signs, poster points and display boards around the immediate outside area. He is also taking on the repair of our rotunda display by Cobb Gate bus stop. The committee has offered to meet the costs of his materials for all of these projects.

This man of many talents also has future plans to provide TV monitors behind the stage for use by performers so that they can more easily identify their cues. Virtually all his materials come from recycling depots and donations, the rest is his time and skills.

## Theatre Coffee Bar

I am delighted to report that, after a recent visit by the Environmental Health inspector, the coffee bar passed with flying colours—and that was before Jenny Wiles and her team worked their wonders during the maintenance period!

Speaking of which, Jenny Wiles deserves an enormous thank you, not just for the frenetic speed with which she has wielded a paint brush, but for organising the revamp, putting in the thought behind it and ensuring its timely completion. On a personal note, as one who works behind the coffee bar from time to time, I love the handles to open the cupboard doors with ease! I think the new look kitchen is a vast improvement.

*Have you renewed your  
TheatreFriends Membership for 2009?*

*Please do!*

**Important Notice for all TheatreFriends**

**If you would like to become part of our friendly fundraising team or to nominate someone, come along on the night or contact Gerry Berry before the**

**AGM**

**Wednesday 18 March 6.30pm**

(prior to the quiz)

### Current TheatreFriends Committee

<b>Chair &amp; Trust Liaison:</b>	Jacky Hedley-Tuffs	445932
<b>Membership Secretary:</b>	Gerry Berry	442036
<b>Minutes/Helpers:</b>	Penny Swannell	443003
<b>Newsletter:</b>	Jenny Waldron	444756
<b>Treasurer:</b>	Richard Doney	
<b>Other members:</b>	Pat Dench	
	Valerie Stuart	Peter Ward
	Jeannie Tee	Maureen Yell

I believe that in a great city, or even in a small city or a village, a great theatre is the outward and visible sign of an inward and probable culture.

*Laurence Olivier*

### TheatreFriends Social Calendar

<b>Thursday 5 March</b>	<b>TF Fundraiser, 'England Made Me'</b>
	Film followed by talk by Director Peter Duffell £7 (£5 for TF Members) includes a free glass of wine & cheese (more wine available to buy) 8pm
<b>Wednesday 18 March</b>	<b>6.30 pm TF AGM followed by: TF Quiz Night, Marine Theatre</b>
	£2 adults, £1 U16 7.30 for 8pm teams of up to 6
<b>Wednesday 15 April</b>	<b>TF Quiz Night, Marine Theatre</b>
	£2 adults, £1 U16 7.30 for 8pm teams of up to 6